



WELCOME

to this company presentation



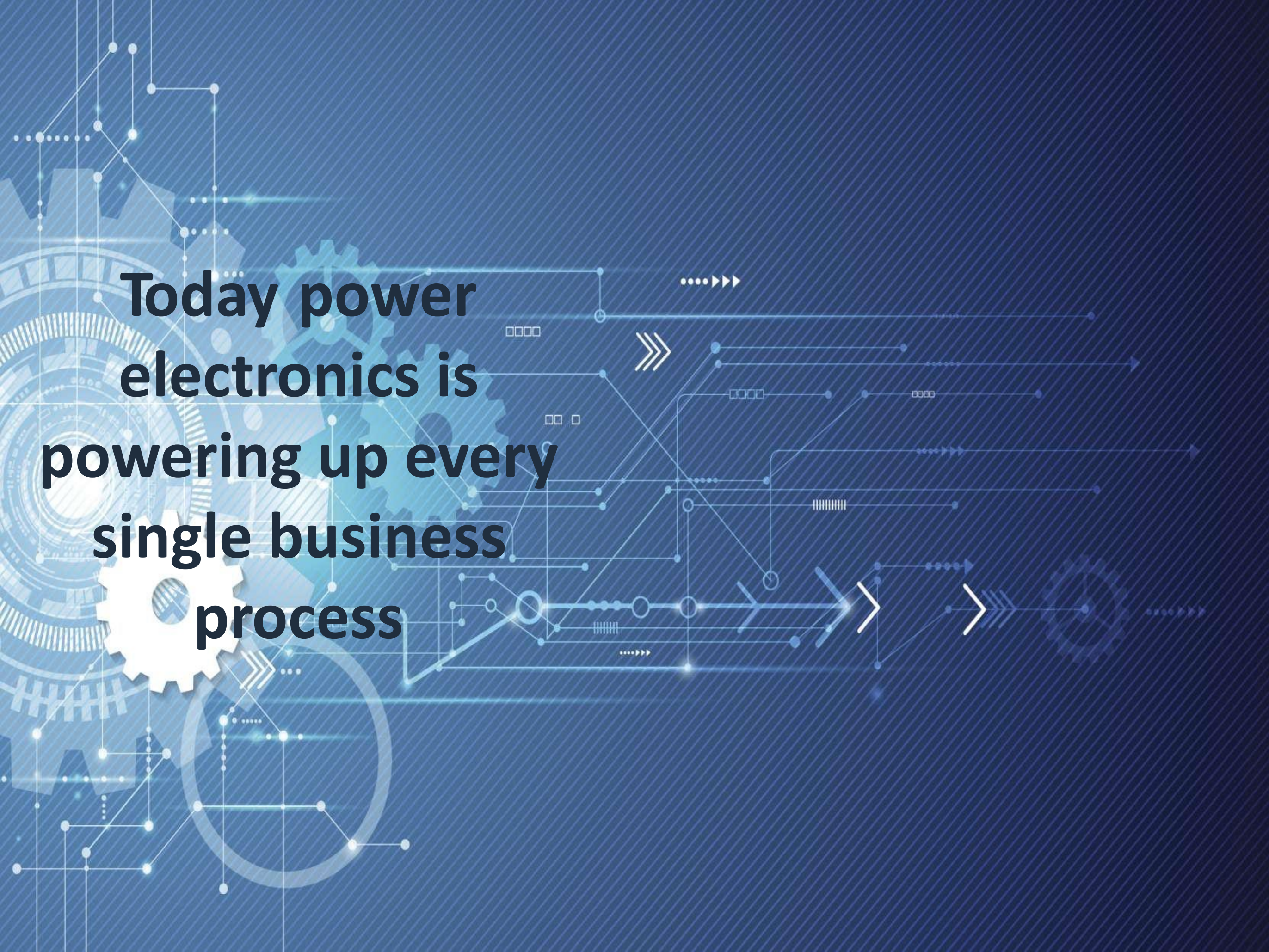
LIVELINE ELECTRONICS



All information in this presentation is proprietary and confidential.

Without the express prior written consent of the Company, the **Presentation** and any information contained within it may not be (i) reproduced (in whole or in part), (ii) copied at any time, (iii) used for any purpose other than your evaluation of the Company or (iv) provided to any other person, except your employees and advisors with a need to know who are advised of the confidentiality of the information.

Doc no : LL/profile/01/17-18 Rev- 00



**Today power
electronics is
powering up every
single business
process**

POWER ELECTRONICS

“Power electronics, the basic technology for electric power conversion and control, has achieved great progress utilizing the advanced power semiconductor devices such as thyristor, GTO, IGBT and IPM. The application areas of power electronics are very wide from power utility systems and uninterruptible power sources to express train drives and robot arm drives. Combined with the progress of advanced control theories and microprocessors, power electronics has been playing an indispensable role in our society.”

**Our Business
is to protect your**

Power “Design,
development, engineering,
manufacturing,
testing, supply, installation
,commissioning and services
of industrial Power electronics
products .”



**Power that protects your
power**

Our proposed new factory

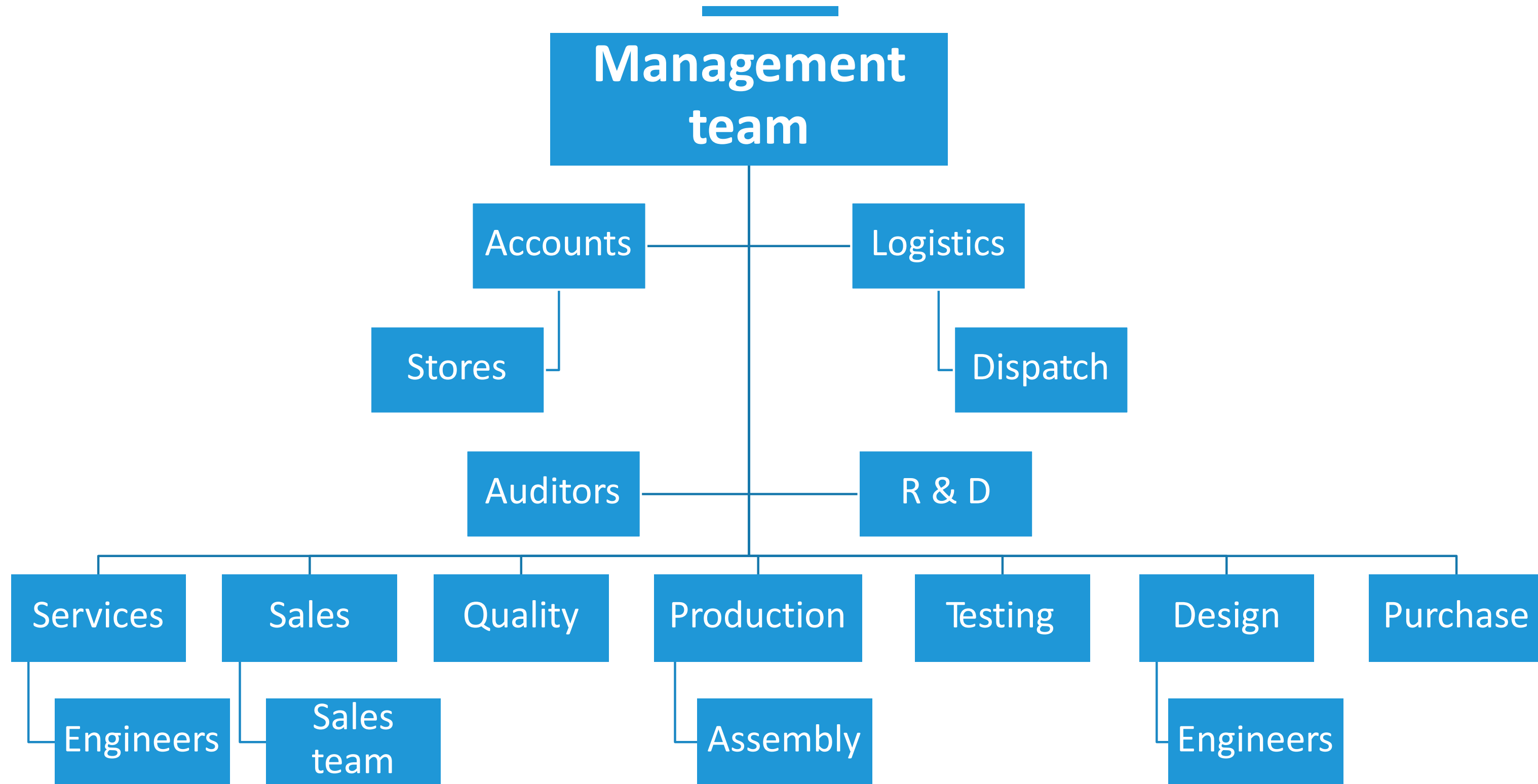


MISSION

To establish ourselves as the leading industrial power electronics product manufacturing company by way of adopting the latest cutting edge technologies.

Organization Structure

Together we make things happen



Company Certifications

We have it

ISO 9000

ISO 14000

NSIC

MSME

CRISIL –SME4

Manufacturing Facility

This is where we cook

Currently 5000 sq feet manufacturing area	Building up new factory with 20000 sq feet proposed area	ERP - Odoo	Certified Quality process
Adequate material handling facility	Latest test facilities	Dedicated design and engg team	50 KVA power connection
Software tools for design and simulations	Drilling machines	Metal cutting tools	Battery banks

Testing Facilities

We test till it fails

100 KVA load
banks

Power analyzer

100Mhz Digital
scopes

Variable DC
sources

100 KVA Variacs

Power analysis
software

Thermocouples
and temp guns for
temperature
measurements

Noise meters

Fluke clamp
meters

Fluke millimeters

Variable AC
Generators

Water loads

Product Portfolio

Just Industrial



INDUSTRIAL UPS

Fully engineered to customers specs for industrial applications



BATTERY CHARGERS

Engineered to suit all type of batteries and comes with multiple configurations



CVCF CONVERTERS

For applications that need different voltages and frequencies



CUSTOM CONVERTERS

Tailor made conversion solutions for specific industrial needs.

Depending on the application, we can conceptualize, design, engineer, and manufacture power quality and protection systems of any kind. Most of our systems are targeted for industrial applications from diverse industrial sectors like Metals, Mining, Oil & Gas, Petrochemicals, Thermal & Hydroelectric Power, Cement, Defense, Railways, Public Health Engg, Nuclear etc. All these solutions are tailor made to suit highly demanding industrial harsh atmosphere.

Product Certifications

Manufactured as per the international standard

IP-42 as per
IEC/IS

UPS Type Test as
per IEC

Charger Type
Test
as per IEC/IS

Third party
inspection
compliant

Key product features

Manufactured to future market requirements



Technicals

- Truly industrial design
- Digital control with 97% efficiency
- Redundant configuration
- Fully compliant with IEEE specs
- Latest MMI
- Custom built to highest quality



Communications

- Wi-Fi
- RS-485
- Ethernet
- GPS
- CAN
- Cloud App



Environmentals

- Suitable for 50degree ambient
- IP-42 class of panel protection
- Forced cooling
- Also natural cooling

Technology offerings

Cutting edge technology



Latest Power Electronics

IGBT based active converter & inverter technology that is highly efficient and conforms to international standards. Equipped to deliver multiple topologies to address diverse applications.



DSP - Control Strategy

Latest DSPs are adopted to develop and implement complex control algorithms to support multiple topologies.



Graphical MMI Interfaces

Graphical LCD display and touch panels to enhance user experience. Easy to use menu driven UI with event loggers for simple diagnostics.



Communications

RS-485, Ethernet, USB, CAN , GSM, Wi-Fi, Zigbee etc



Research & Development Team

Concentrating on development of a power electronic ecosystem



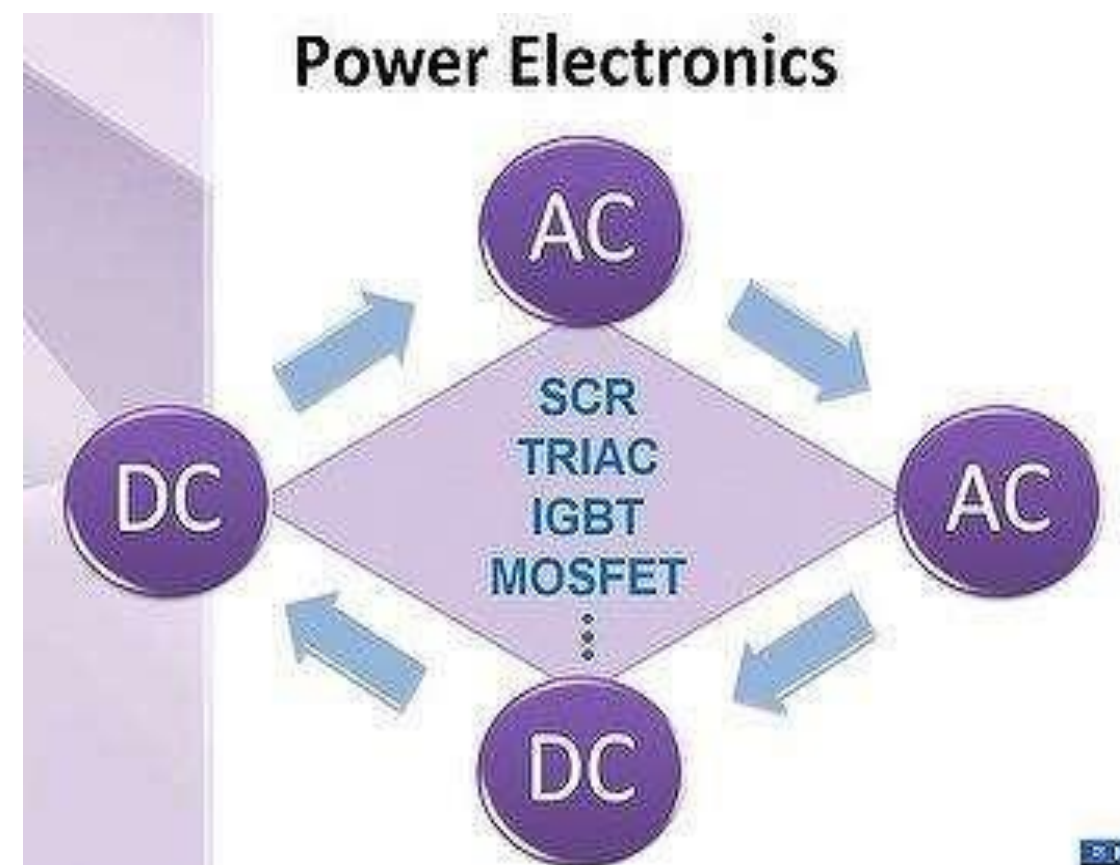
In-house team

In-house team of engineers with the required skills and experiences to conceptualize and structure the development of new products and also responsible for testing & commercialization.



External Development

A team of external developers with skills n experiences for both power electronic hardware designs as well as writing software n algorithms including thermal engineering, PCB layouts etc.



Outsourcing



A great deal of our developments are outsourced to external outfits, research and development organizations, companies.etc.

University / Colleges

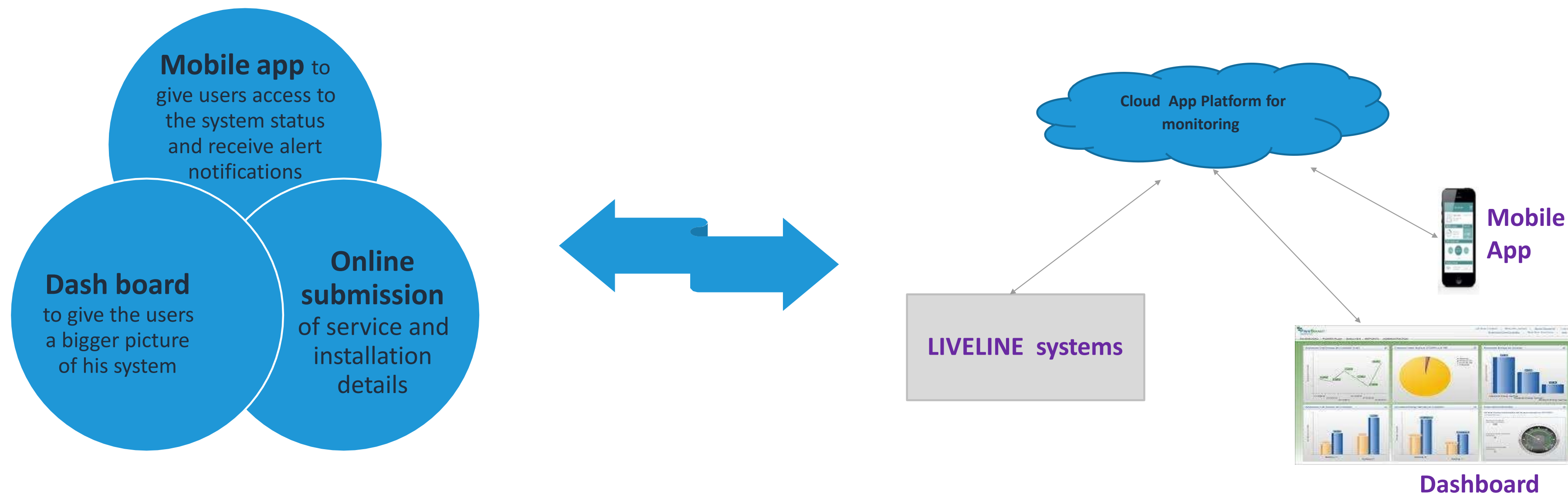


We are also engaging interested engineering colleges and providing developmental project in order to expedite our own process and also to inculcate power electronic skills among students. There by nurturing the eco system

Research & Development

Cloud makes it easy

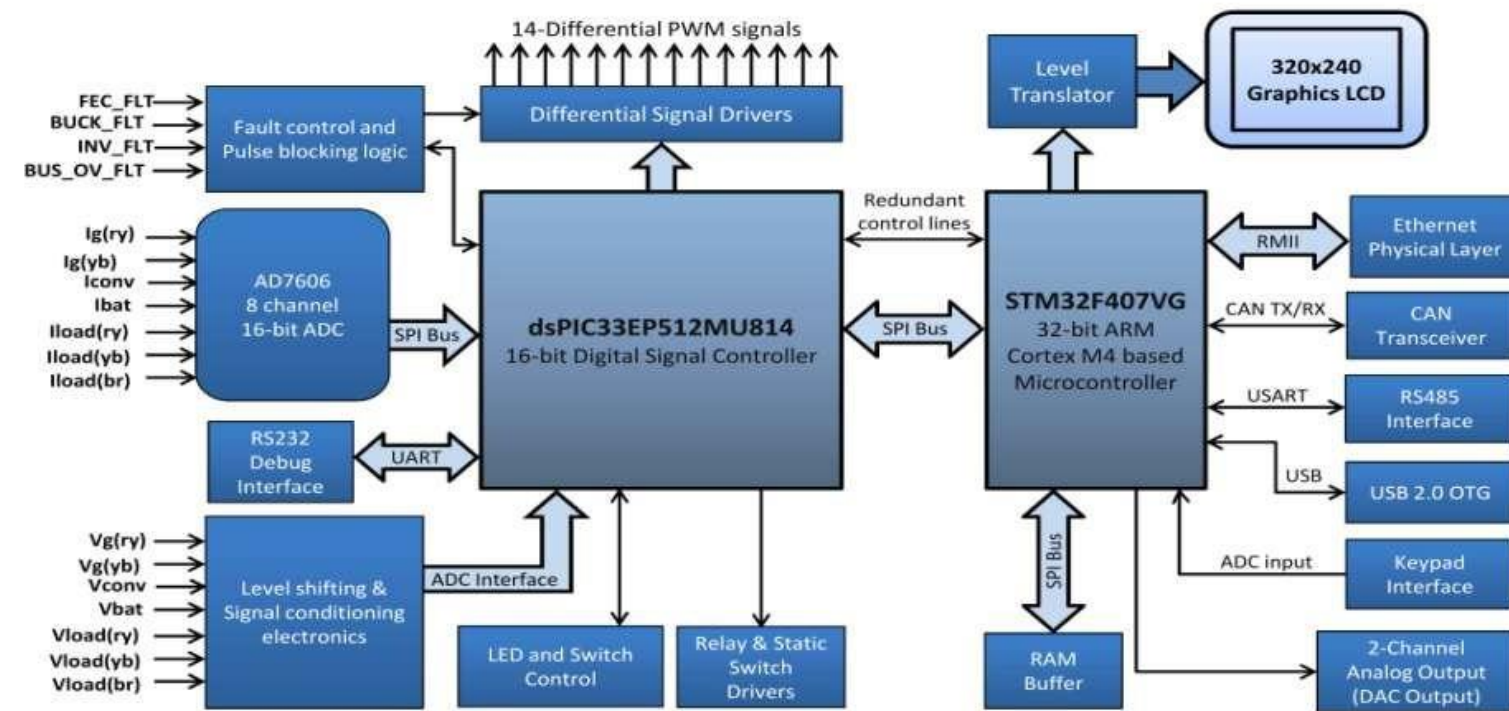
Proposed cloud application to enhance after sales services experience



Research & Development

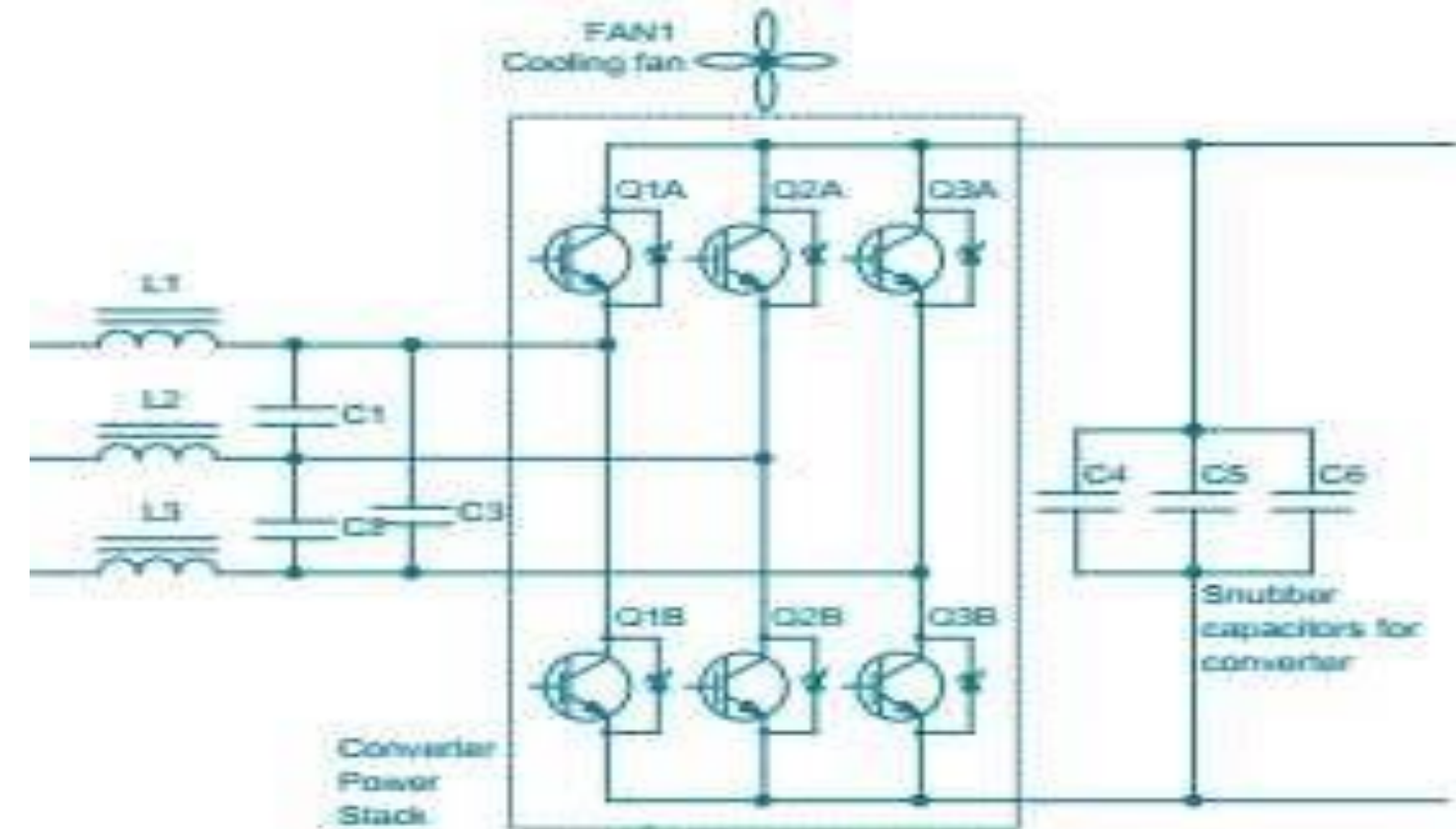
What we have commercialized so far

High level block diagram of Digital Controller Card



Fully digital control strategy

Consisting of a 16 bit DSP to handle the control algorithms of three converters and a 32 bit microcontroller to handle communication & MMI functionalities. Thereby this controller can implement any kind of power converters including custom built systems as well. .



IGBT based active rectifier

Advantages of an IGBT based active rectifier front end is well known for its numerous power quality benefits like low input current harmonic distortion and improved input power factor.

Future R&D projects

Leading the way by technology

01

Bidirectional DC-DC converters for motor back up application . Today, large number of industries are looking for cheaper motor back up systems for increased productivity.



02

Three phase Solar inverters – 10KW to 200KW – to benefit from the booming solar market . India is going to be solar capital of the world.



03

Chargers for Li-Ion batteries for industrial and automobile applications. Li-Ion is being envisaged as the future of power stage for its multiple tech advantages.

04

Bidirectional AC-DC converters for charger/ discharger application for batteries



05

Electronic AC/DC load banks for multiple applications like testing and battery discharging needs.

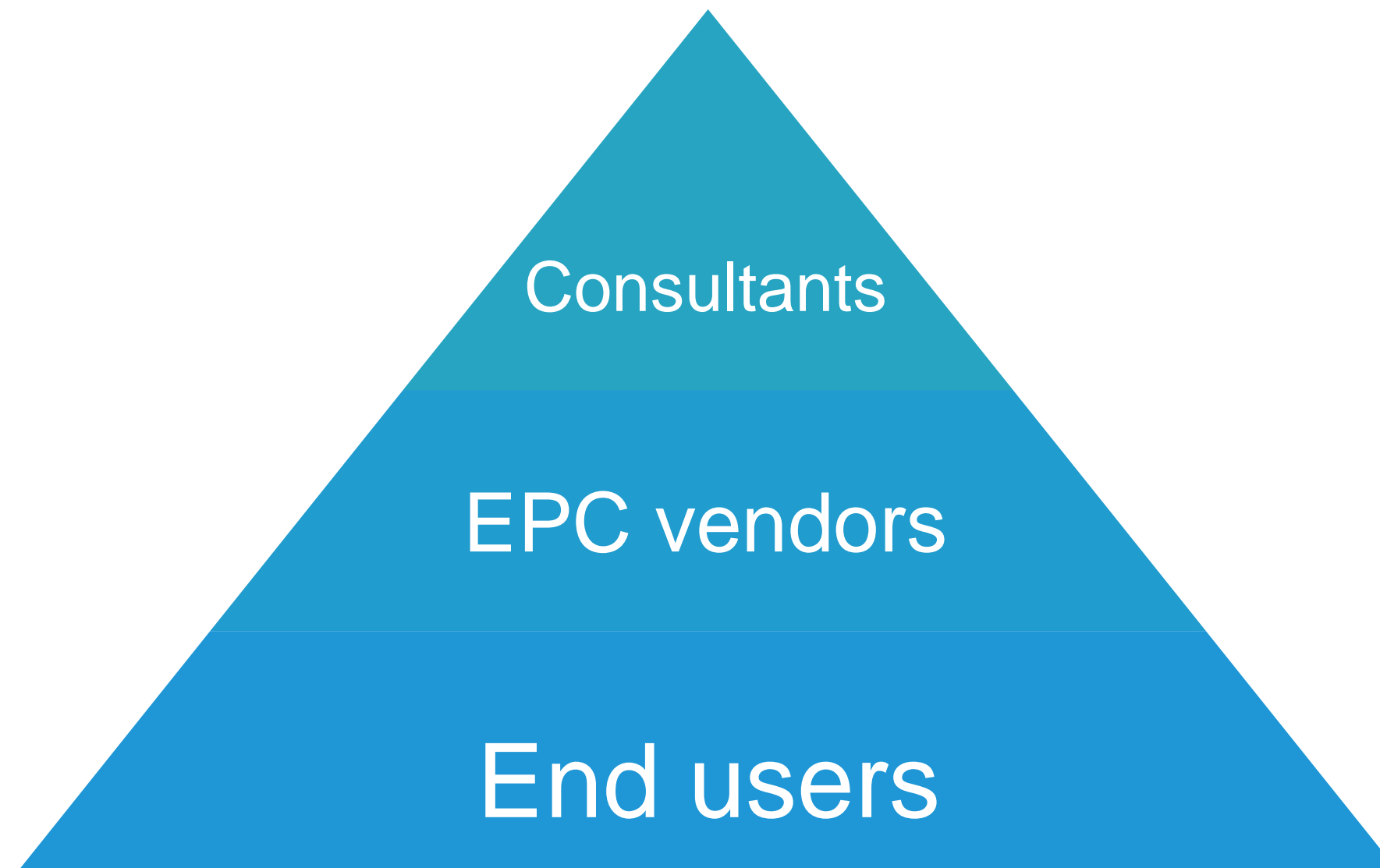


06

Large capacity inverters (up to 1 MW) for solar as well as UPS systems

Customers

We cater to all



Three most important communities to increase our business.

We go the full distance to increase our reach.

End customers to consultants & EPC vendors are the key to our business . We thrive everyday to reach and get our products n services known and evaluate by them.

Sector wise users profile

We have worked with them

Metals

- TISCO
- BOKARO STEEL
- IISCO STEEL PLANT
- ROURKELA STEEL PLANT
- DURGAPORE STEEL PLANT
- NMDC STEEL
- VIZAG STEEL

Oil N Gas

- IOCL , Bongaigaon
- IOCL,Guwahati
- IOCL, Mathura
- IOCL, Panipat
- ONGC
- OIL INDIA
- IOCL, Haldia
- IOCL, Barauni

Power Generation

- NHPC
- NEEPCO
- CESC
- JHABUA POWER
- JAYPEE VENTURES
- NTPC
- OPTCL
- NPCIL

Sector wise users profile

We have worked with them

Public Health

- DHANBAD WATER SUPPLY
- KEIP
- KMC
- PHED, West Bengal
- PHED, Rajasthan
- TWAD, Vellore, Tamil Nadu
- DELHI JAL BOARD

Defense

- MES
- AIR FORCE
- INDIAN NAVY
- GRSE, Kolkata

Transmission & Distribution

- MECL, Shillong
- NESCO
- CESU
- WBSETCL
- NBPDCL
- JVBNL
- OPTCL - ODSSP

Sector wise users profile

We have worked with them

Railways

- Eastern Railways
- South Eastern Railways
- East Central railways

Cement

- Shayona Cement, Africa
- Goldstone Cement
- Meghalaya Cement
- Amrit Cement
- Sarbattom Cement

Manufacturing

- Linde India
- Manaksia Ltd
- Adani Wilmar
- Maxwatt Turbines
- Chryso
- Invitrogen
- Jaiswal Neco

Sector wise users profile

We have worked with them

EPC Vendors

- LnT ECC
- SIEMENS
- SCHNEIDER
- ABB
- ION EXCHANGE
- VOLTAS
- MECON
- LnT EBG
- MCNALLY BHARAT

Exports

- NIGERIA
- BANGLADESH
- NEPAL
- KENYA
- ETHIOPIA
- SRILANKA

Consultants

- MECON
- DCL
- MND
- WAPCOS
- KORUS
- TATA CONSULTING
- FITCHNER

Get in Touch with Us

Just get in touch



Kolkata

North ramchandrapur
Narendrapur, Sonarpur,
South 24 paraganas
Kolkata-700103, West Bengal



Bokaro

Resident representative



Our Phone

(033) 6452 0115
(033) 6452 0116



Email / Website

info@livelineindia.com
www.livelineindia.com

Thank you



All information in this presentation is proprietary and confidential.

Without the express prior written consent of the Company, this presentation and any information contained within it may not be (i) reproduced (in whole or in part), (ii) copied at any time, (iii) used for any purpose other than your evaluation of the Company or (iv) provided to any other person, except your employees and advisors with a need to know who are advised of the confidentiality of the information.

Doc no : LL/profile/01/17-18 Rev- 00